

DEC 11 2020

*Karen Brown*

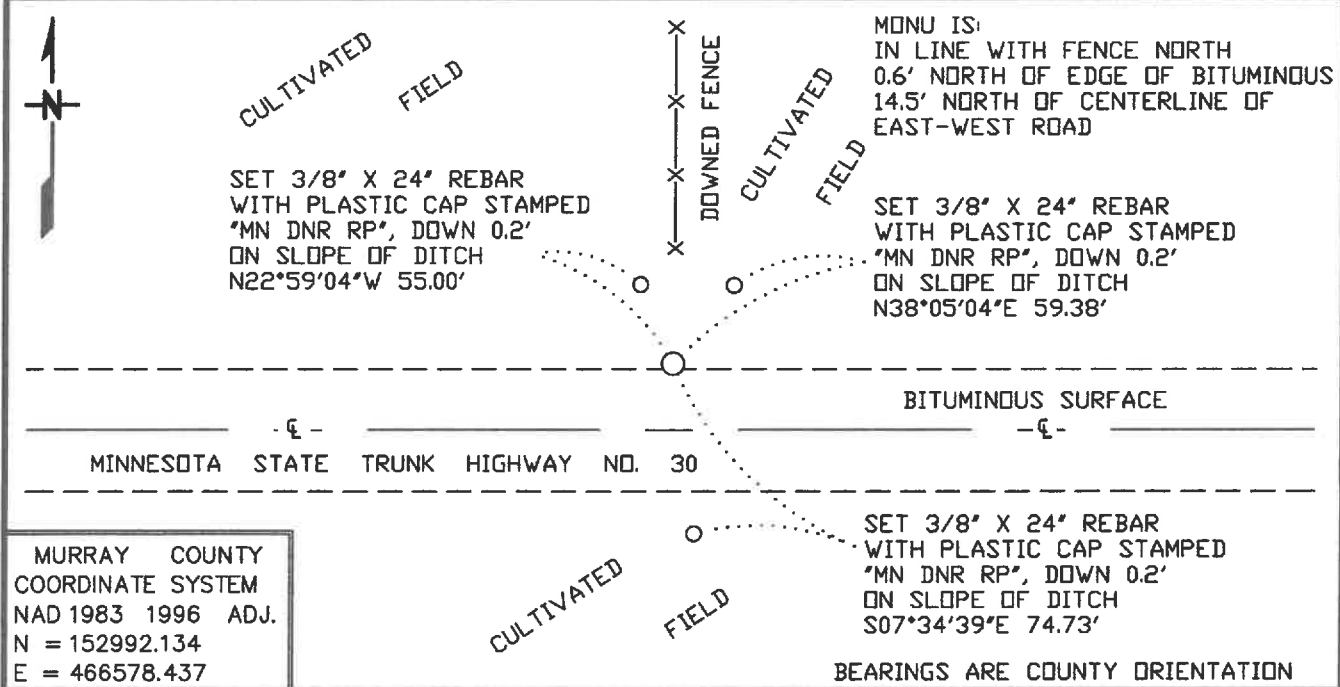
Index No. J-11

# CERTIFICATE OF LOCATION OF GOVERNMENT CORNER

NORTH QUARTER Corner of Section 16, Township 106 N, Range 42 W  
5TH Principal Meridian, State of Minnesota, County of MURRAY

At the corner location shown on the sketch:

- On \_\_\_\_\_ found a \_\_\_\_\_  
DATE
- left monument as found,  lowered monument,  removed monument (explain)
- On 9/29/2020 Placed a 3/4" X 24" REBAR WITH PLASTIC CAP STAMPED  
DATE "MN DNR LS 17003", DOWN 0.3'



MURRAY COUNTY  
COORDINATE SYSTEM  
NAD 1983 1996 ADJ.  
N = 152992.134  
E = 466578.437

Statement of evidence for this corner location is on back of this page.

OCT 2020  
WMA00026

I hereby certify that this plan, specification, or report was prepared by me or under my direct supervision and that I am a duly Licensed Land Surveyor under the laws of the State of Minnesota.

SIGNATURE *Bruce W. Shepperd* DATE 12/09/2020 License Number 17003  
BRUCE W. SHEPPERD

The DNR Division of Lands and Minerals contacted the following for survey information:

Website - [mngeo.state.mn.us](http://mngeo.state.mn.us) for GLO plat and field notes

Website - [murray-countymn.com](http://murray-countymn.com) for section and quarter section corner information

Website - [mndot.maps.arcgis.com](http://mndot.maps.arcgis.com) for Railroad and Highway Right of Way Maps

Murray County Recorder's Office

Zieske Land Surveying Inc. of Windom

Madsen Land Surveying Inc. of Fairmont

Buettel-Moseng Land Surveying Inc. of Marshall

MnDOT Office in Willmar

1866 U.S. General Land Office notes, obtained from [mngeo.state.mn.us](http://mngeo.state.mn.us), show the corner marked with a post in a mound.

1908 Leeds Township Ownership Plats, obtained from the County Recorder's Office, show ownership  
1926 lines east, west and north in the area of the corner. An east-west road is shown along the north line of Section 16.

No A Right-of-Way Map for Minnesota State Trunk Highway Number 30, obtained from  
Date [mndot.maps.arcgis.com](http://mndot.maps.arcgis.com), shows a symbol for corner but a description of what kind of monument was found or set is not given. The corner is shown:  
at the intersection of east-west road and fence line north  
14.5 feet north of POT Station 1098+20.0

1982 Alignment-Land Ties field notes for Minnesota State Trunk Highway Number 30 from the County Line to Jct. T.H. 267, obtained from the MnDOT Office in Willmar, shows a symbol for corner but a description of what kind of monument was found or set is not given. The corner is shown:  
at the intersection of east-west road and fence line north  
14.5 feet north of POT Station 1098+20.0

No A CADD drawing of the alignment for Minnesota State Trunk Highway Number 30, obtained  
Date from the MnDOT Office in Willmar, contains NAD 1983 (2011 Adjustment) Murray County Coordinates of center line stationing.

2020 September 29, the DNR Division of Lands and Minerals searched for and found centerline stationing at the positions per MnDOT's CADD drawing.

Then computed a position for the north quarter corner of Section 16 as follows:

14.5 feet northerly of POT Station 1098+20.0

90 degrees north of a line from POT Station 1098+20.0 to POT Station 1072+01.2

The computed position for the corner was found to be:

in line with a downed fence with steel fence posts north

2630.84 feet from the northeast corner of Section 16

2620.37 feet from the northwest corner of Section 16

4.39 feet north and 5.23 feet west of the lost position

The area of the computed position was scanned with an electronic metal detector but no metal attraction was obtained.

North Quarter Corner of Section 16, Township 106 North, Range 42 West  
Page 2 of 2

Analysis of the above information led the DNR Division of Lands and Minerals to conclude that the computed position for the corner per MnDOT's information, which is at the former location of the intersection of an east-west road and fence line north, marks the obliterated location of the corner. A ¾ inch by 24 inch rebar with a plastic cap stamped "MN DNR LS 17003" was set at the computed position for the corner and ties were taken to it as shown on the sketch of reference ties.